



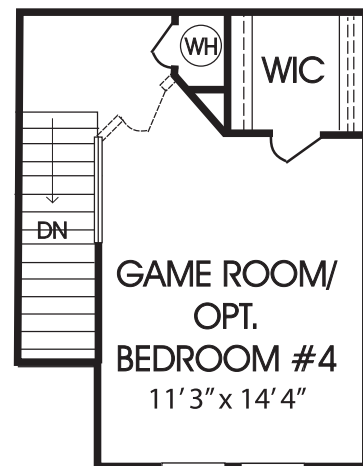
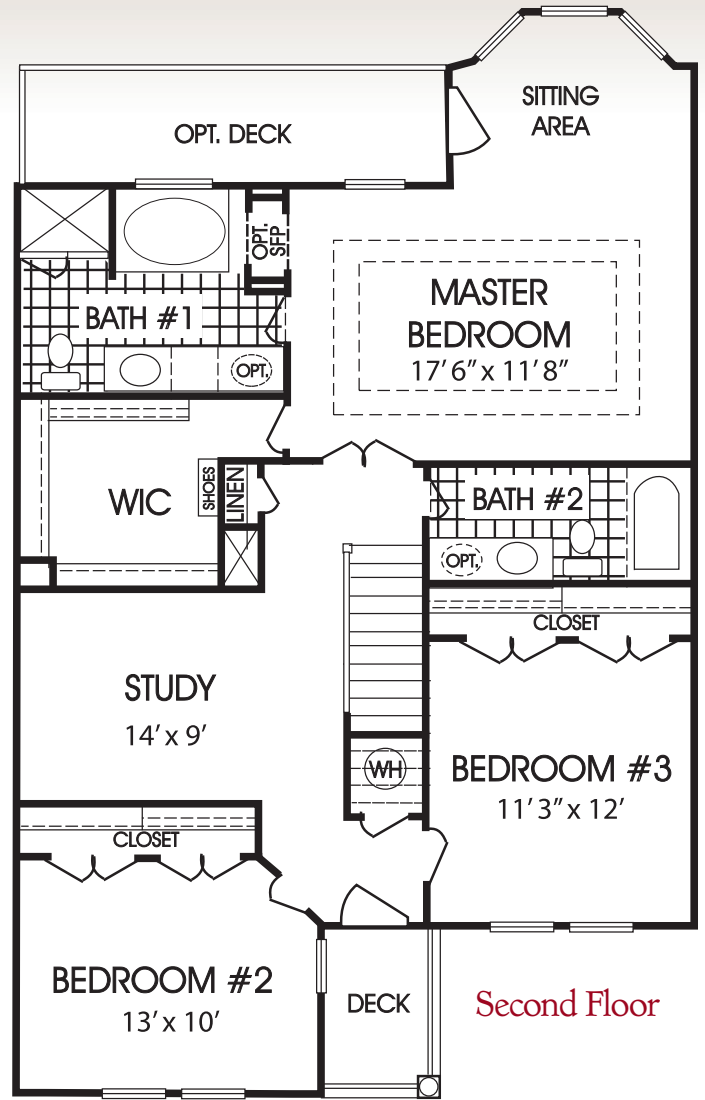
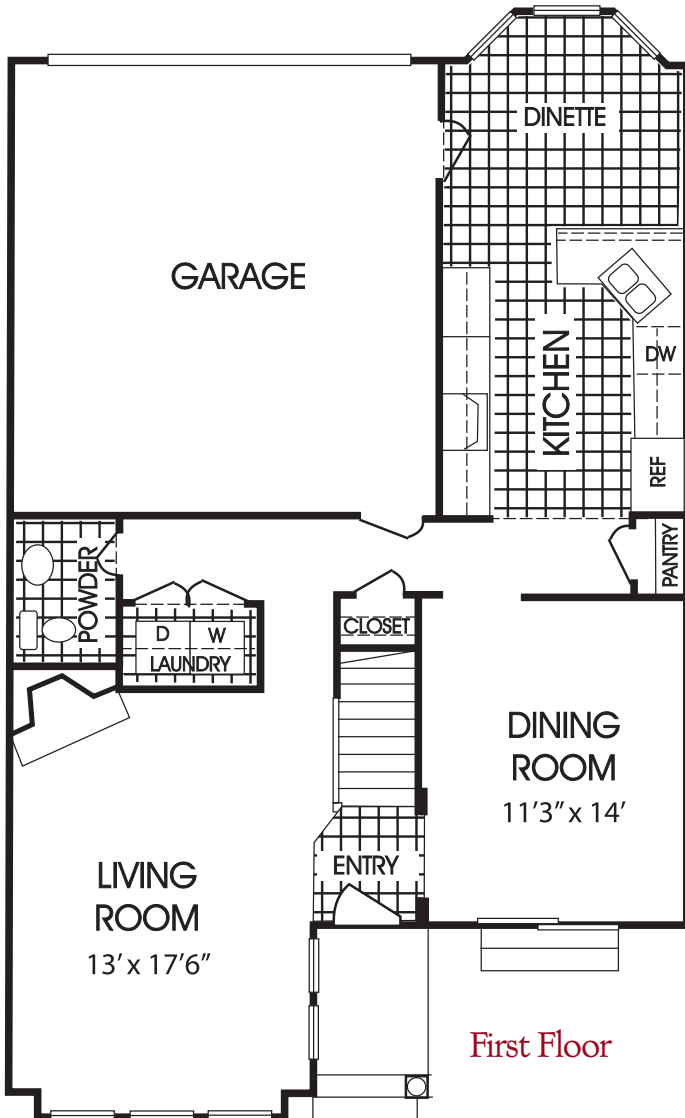
Shelbourne

The Towns

Plan B2070 - 1874 Square Feet

Plan B2071 - 2146 Square Feet

Priced from \$ _____



8110 Lee Hall Avenue Suffolk, VA 23435 p 757.484.6344 f 757.484.6346

hrcsales@terrypeterson.com www.hamptonroadscrossing.com

Floor plans subject to change. Orientation may not match current model. All dimensions shown and square footages listed are approximate. Your home may vary slightly. The first dimension shown is from left to right, the second dimension shown is from front to back.

Another fine condominium community by Terry•Peterson Residential Companies. Sales by Rose & Womble Realty.

